

# William Morris Windows



The Adoration of the Magi

According to the record of all William Morris windows by E. A. Sewter in the Picton library, Liverpool, there is a mystery???

A stained glass window was commissioned, and designed by Sir Edward Burne Jones, and made in 1871 depicting Samuel; but no such window exists today in St Nicholas Church

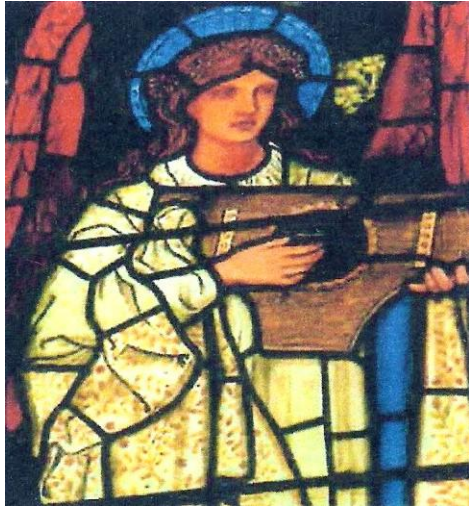
It has been many years since the last stained glass window was installed in St Nicholas but with the efforts of the parishioners they will now remain in situ for our forebears to admire either restored or preserved to celebrate the talents of William Morris and Co.

© Pam Beesley

Details correct at time of printing but subject to change  
Revised July 2017

## ST NICHOLAS' AND ST MARY'S: THE HALEWOOD LOCAL ECUMENICAL PARTNERSHIP





Flying Angel with T Shaped Dulcimer (William Morris)

St. Nicholas Halewood has some of the best examples of the art of stained glass as designed by William Morris and Co.

William Morris was an artist, political writer and public figure, but is best remembered today for his decorative arts business. The association and business partnership with the pre-Raphaelite painters; Edward Burne Jones (who designed most of our windows), and Dante Gabriel Rossetti is reflected in the Stained glass in St Nicholas Church.

Nature was a source of inspiration and natural dyes and pigments were used instead of synthetic ones to create characteristic subtle effects in everything they created



St Dorothy, Patron Saint of Gardens and Flowers

This is evident in St Nicholas when you compare one of the more modern windows with an example of the work of Morris & Co. the newer one looks positively garish in comparison.

It was Morris & Co., who in the 19<sup>th</sup> Century revived the medieval technique of fixing small pieces of coloured glass with leading, while the later technique of staining with enamel was refined. In most of the firm's glass commissioning's, the drawing of the figures was done by the artists Burne Jones and Rossetti, but the pattern of the leading and placement of the colours was decided by William Morris himself.